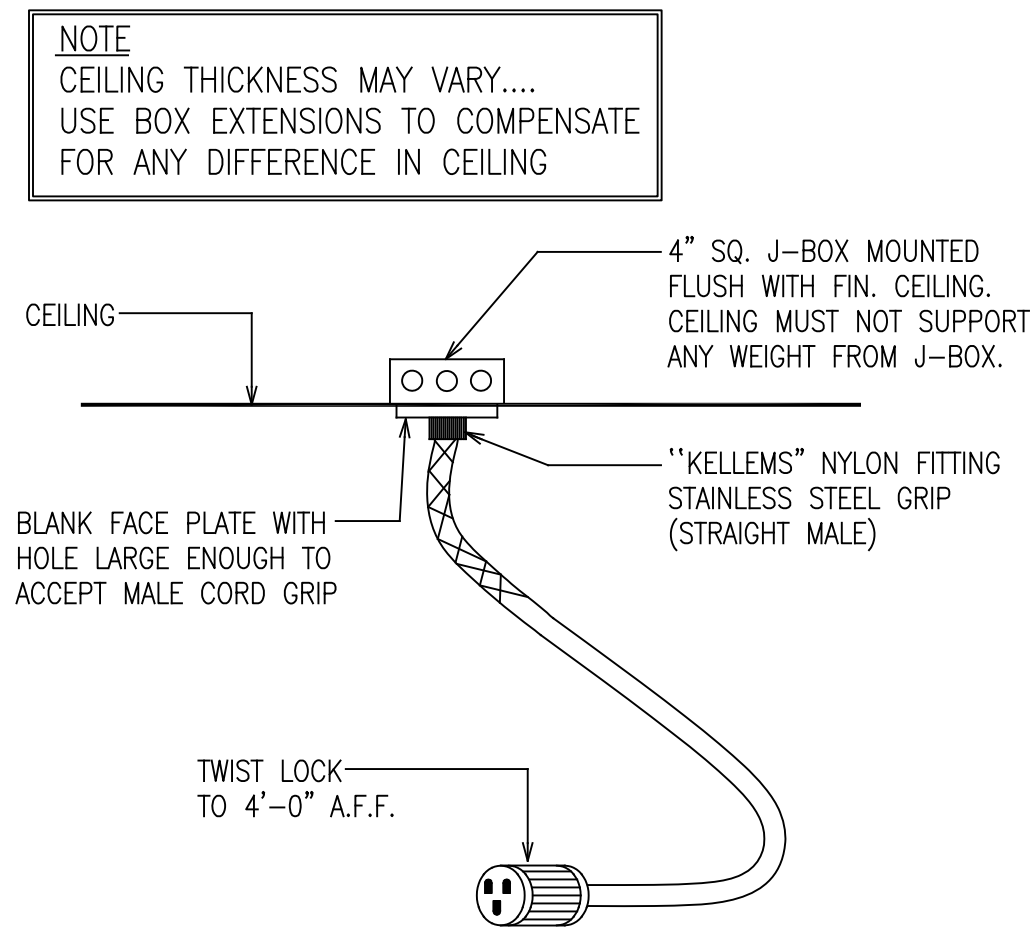
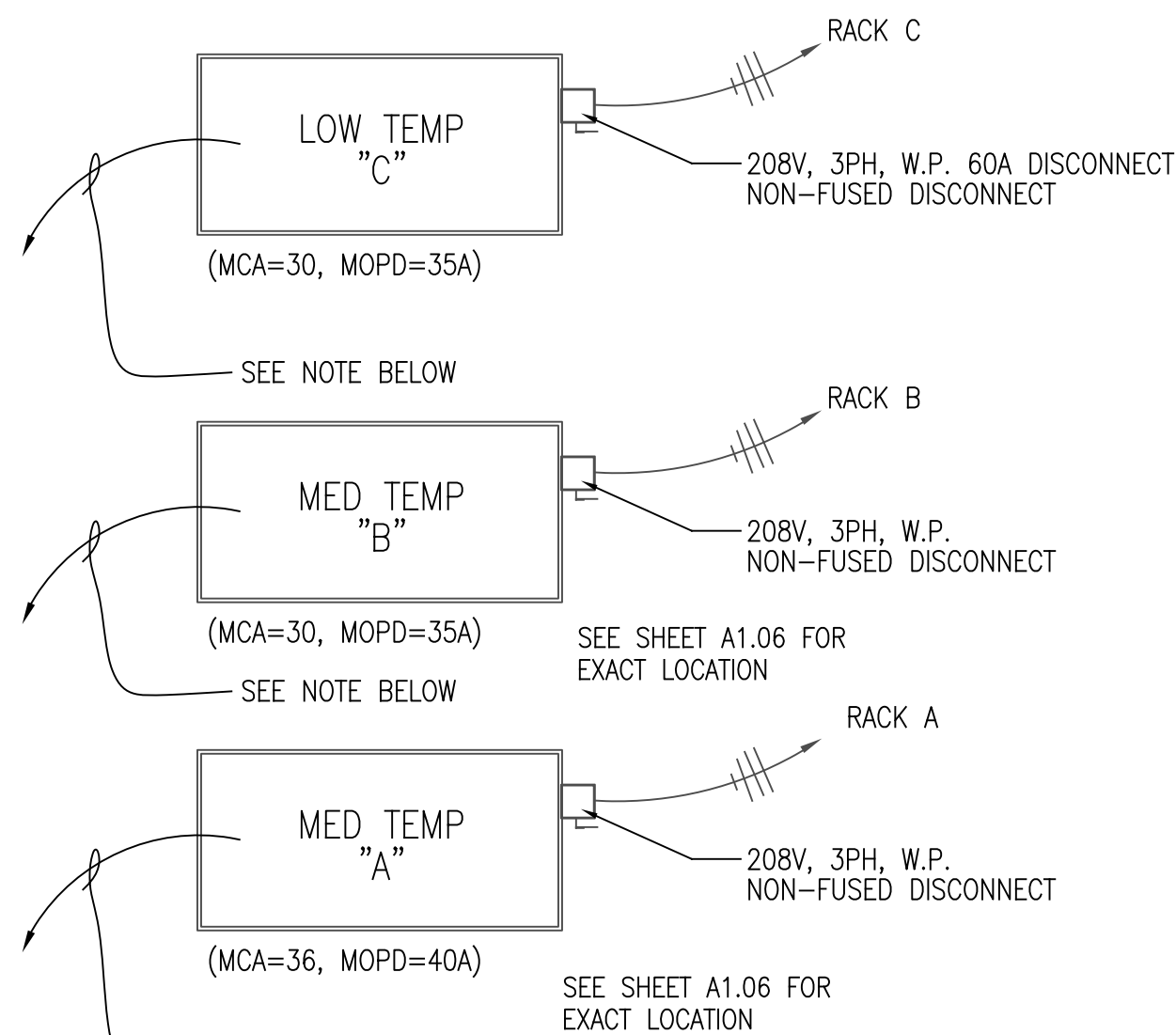


1 ROOFTOP H.V.A.C. EQUIPMENT DETAIL  
E5.01 NOT TO SCALE

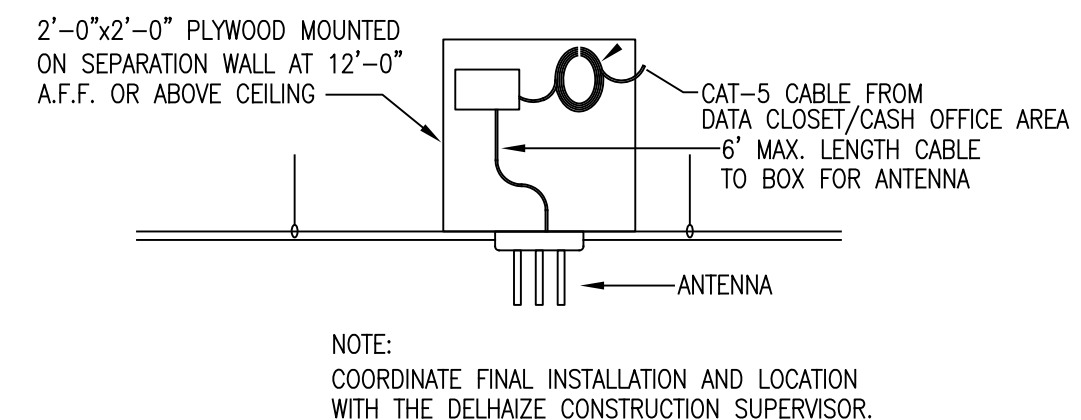


2 HANGING TWIST LOCK DETAIL  
E5.01 NOT TO SCALE

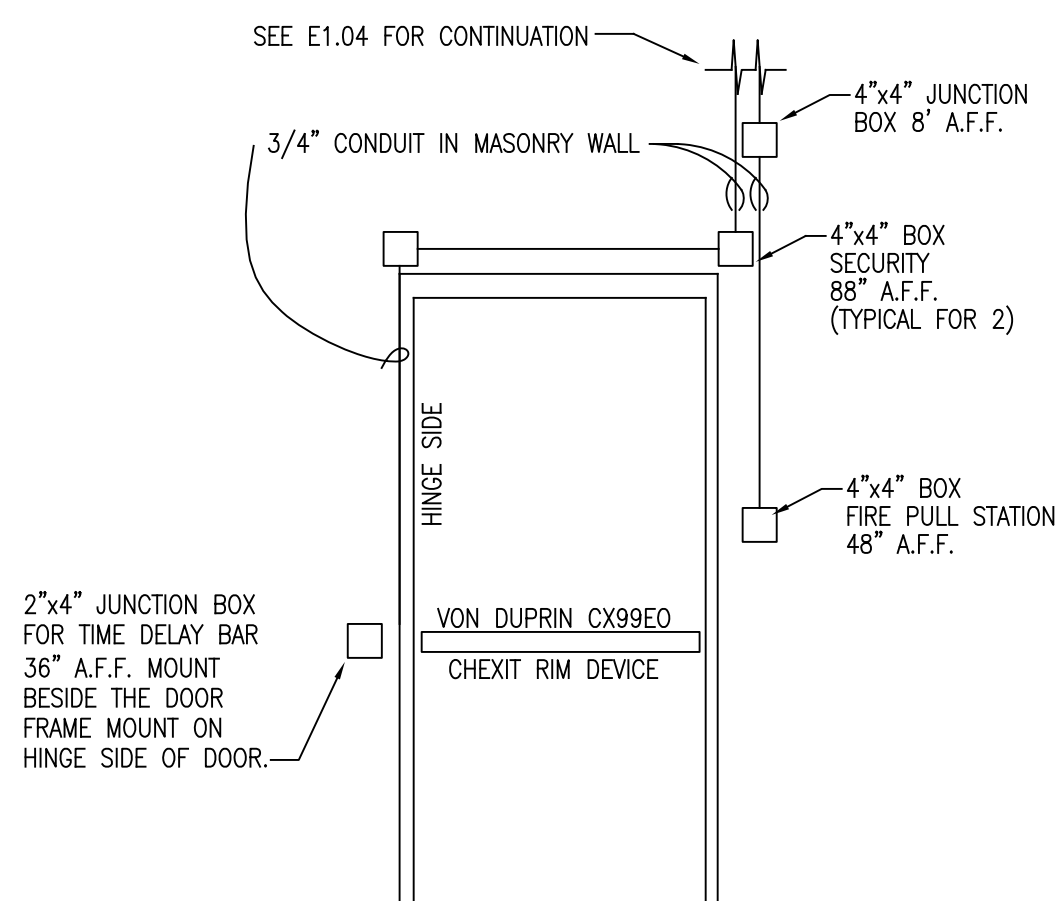


NOTE:  
RUN A SEPARATE 3/4" CONDUIT FROM EACH REFRIGERATION CONTROLLER TO ITS RESPECTIVE CONDENSER, CONTAINING (1) 4-WIRE SHIELDED CABLE (BELDON #8760) FOR COMMUNICATION. ONLY SHIELDED CABLES SHALL BE RUN IN THIS CONDUIT.

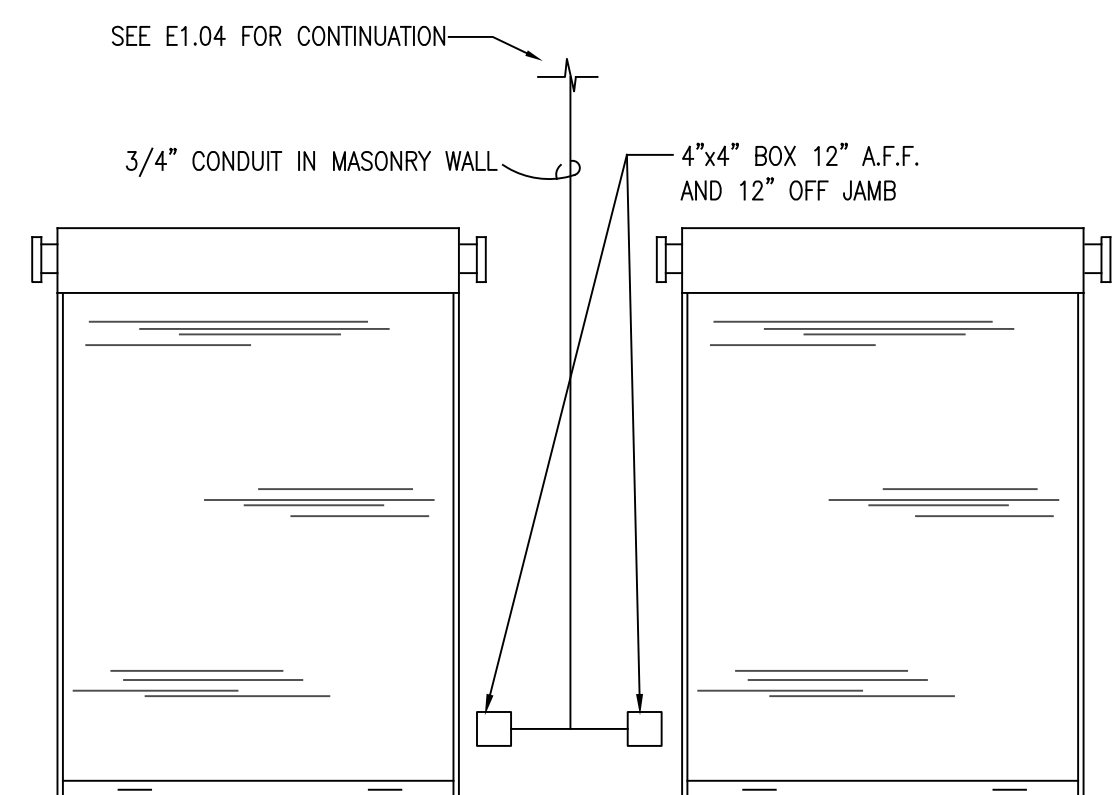
3 ELECTRICAL DETAIL FOR CONDENSERS ON ROOF  
E5.01 NOT TO SCALE



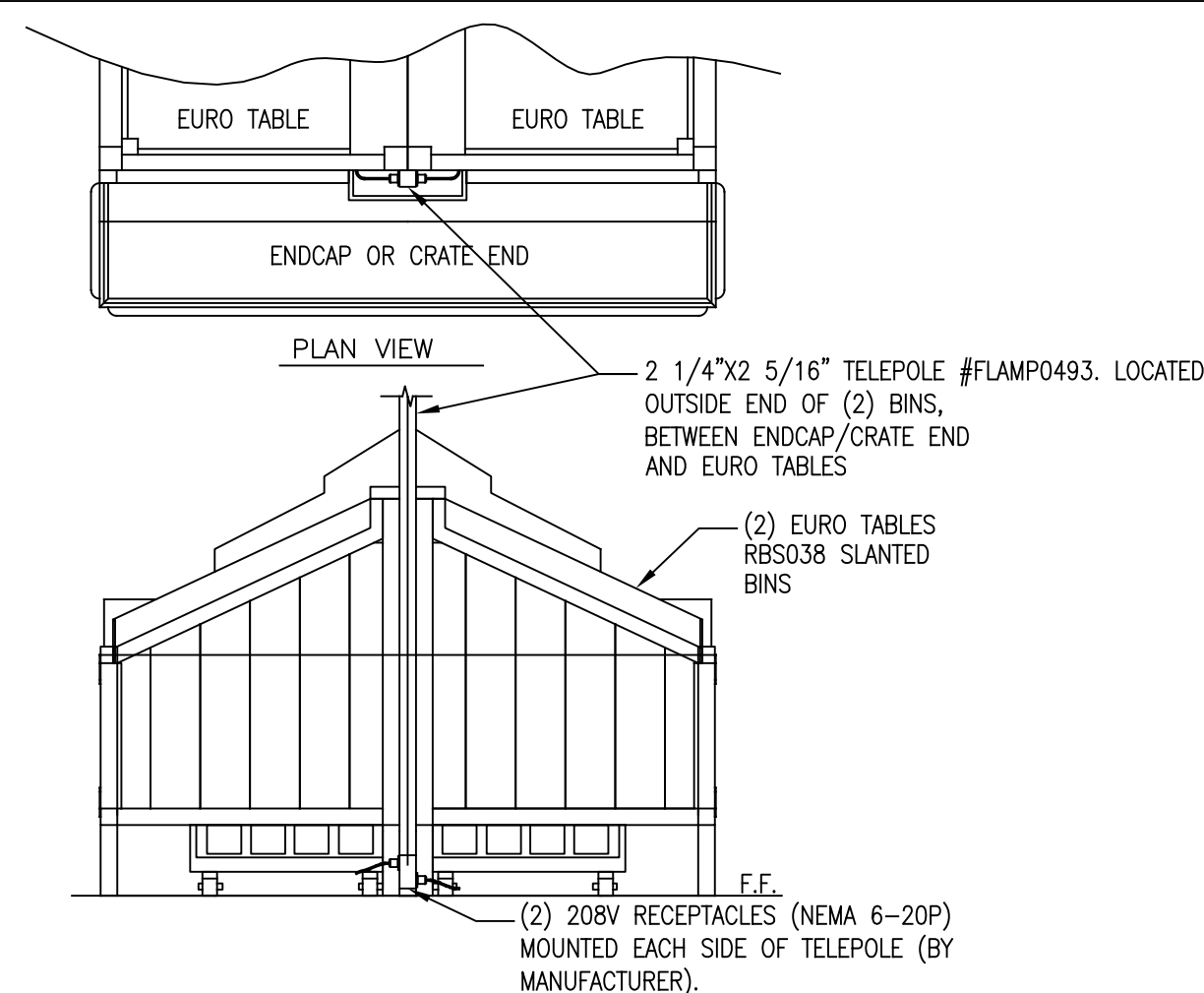
4 CAT 5 CABLE PLYWOOD BACKBOARD DETAIL  
E5.01 NOT TO SCALE



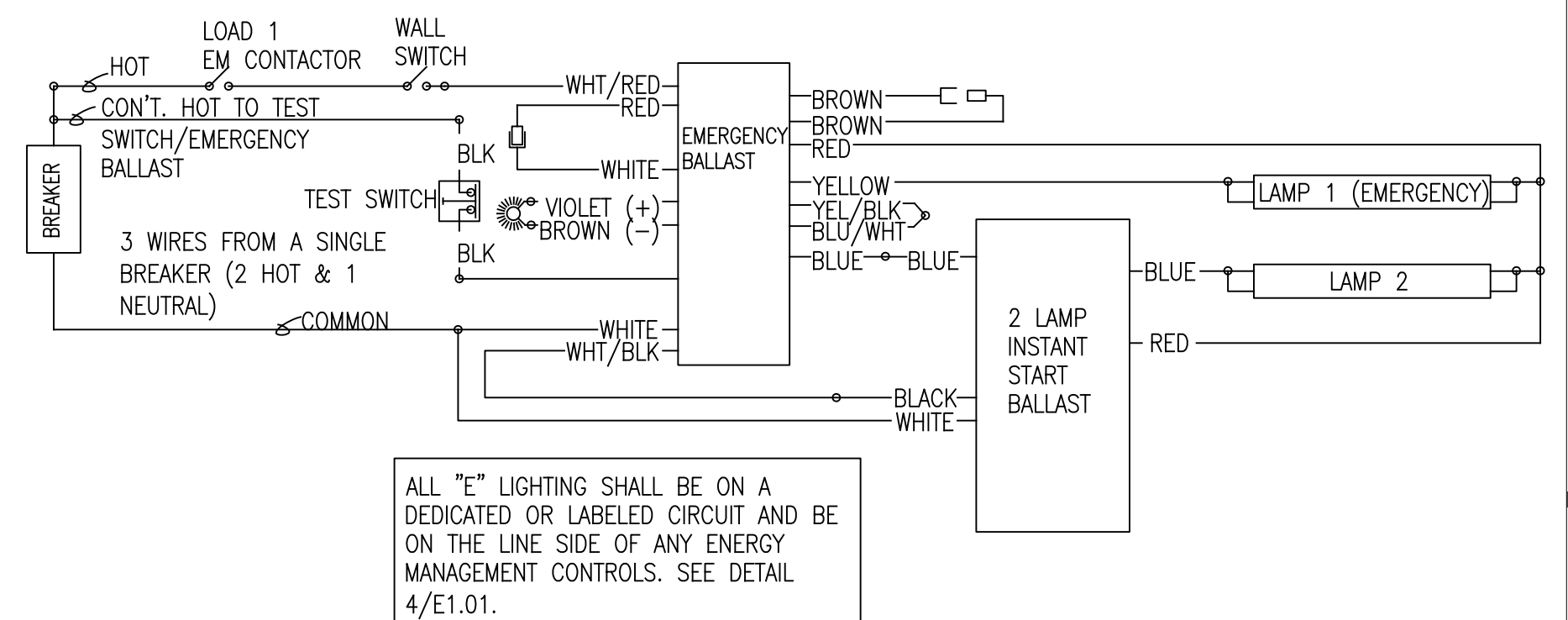
5 SECURITY CONDUIT - DETAIL #1  
E5.01 NOT TO SCALE



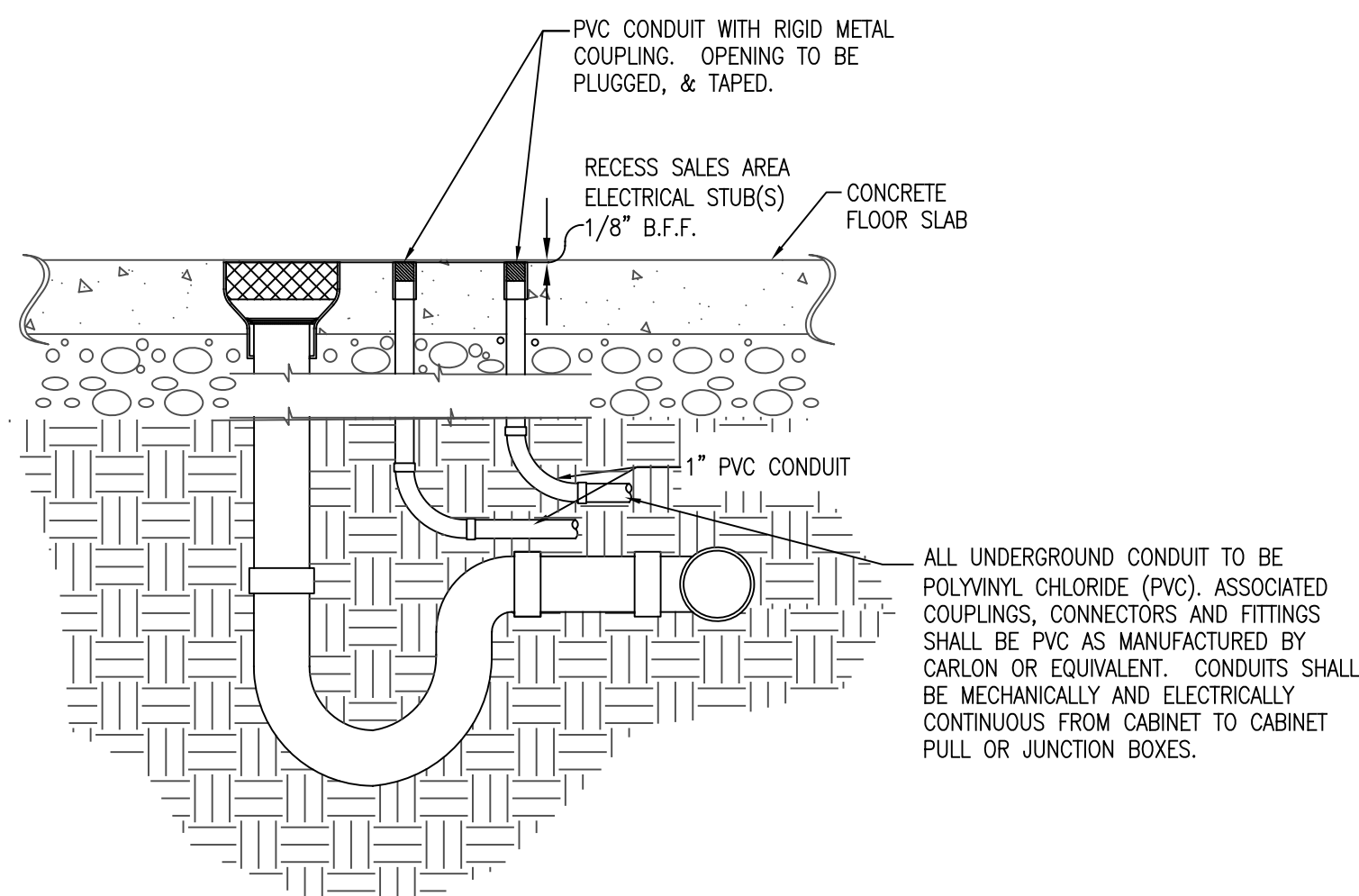
6 SECURITY CONDUIT - DETAIL #2  
E5.01 NOT TO SCALE



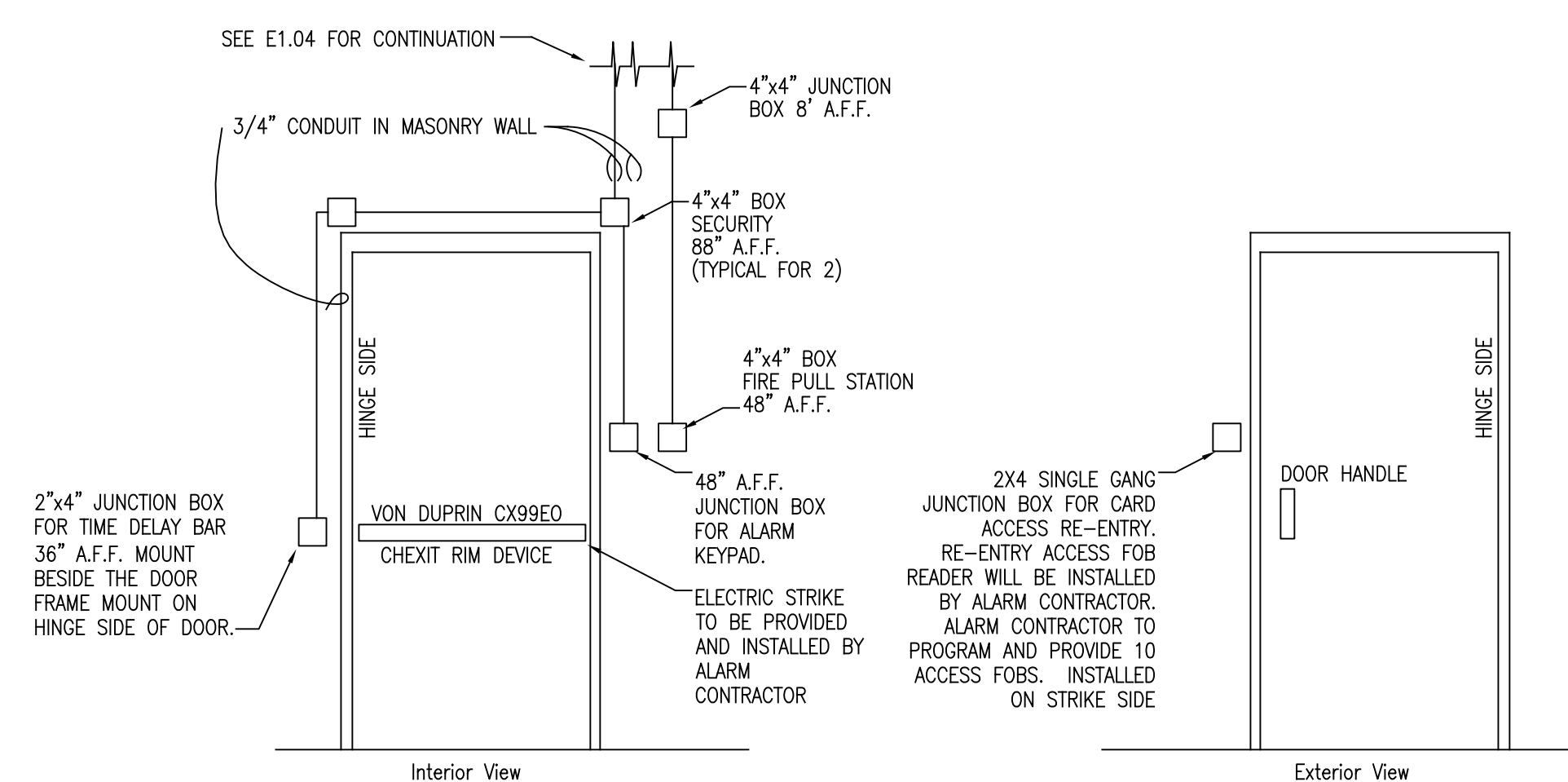
7 SIDE ELEVATION DUAL PRODUCE SLANT BINS  
E5.01 NOT TO SCALE



8 EMERGENCY FIXTURE BALLAST/EMS LOAD WIRING DIAGRAM  
E5.01 NOT TO SCALE



9 SALES FLOOR ELECTRICAL STUBS @ CASES  
E5.01 NOT TO SCALE



10 SECURITY CONDUIT - DETAIL #3  
E5.01 (TO GO DOOR)

## LEGEND

|        |  |      |   |
|--------|--|------|---|
| S      | SINGLE POLE SWITCH                     | ⊗    | DROP FROM CEILING                                     |
| Swp    | WEATHERPROOF SWITCH                    | ⊕    | NEW FLOOR STUB-UP                                     |
| Sp     | SINGLE POLE SWITCH WITH PILOT LIGHT    | ○    | ELECTRICAL CONNECTION UNDER CASE                      |
| S3p    | THREE-WAY SWITCH WITH PILOT LIGHT      | □    | FLUORESCENT FIXTURE                                   |
| Sm     | SINGLE POLE, MOTOR RATED SWITCH.       | ⊙    | LIGHT FIXTURE (SEE LIGHT FIXTURE SCHEDULE, SHEET E-1) |
| ⊕      | DUPLEX RECEPTACLE                      | ⊗    | EXIT LIGHT  |
| ⊕ W.P. | WEATHERPROOF RECEPTACLE                | ⊕    | EMERGENCY LIGHT FIXTURE                               |
| ⊕ 4    | QUADRAPLEX RECEPTACLE                  | ⊕    | FAN MOTOR (HORSEPOWER AS NOTED)                       |
| ⊕      | SPECIAL PURPOSE OUTLET (TYPE AS NOTED) | ⊕    | PUSHBUTTON  |
| ⊕      | 4"x4" JUNCTION BOX                     | ⊕    | SIGNAL BELL   |
| ⊕      | TELEPHONE JACK                         | ⊕    | SENSOR, TEMP/HUMIDITY (HANDY BOX MTD.)                |
| ⊕      | MIC OR INTERCOM (AS NOTED)             | ⊕ SC | SCALE COMMUNICATION OUTLET                            |
| ⊕      | DISCONNECT SWITCH (TYPE AS NOTED)      | ⊕    | MOTOR STARTER   |
| ⊕      | THERMOSTAT                             | ⊕    | FLOOR BOX WITH BRASS TRIM AND DUPLEX RECEPTACLE.      |
| ⊕      | MAGNETIC SWITCH                        |      |   |